

CAMEROON BAPTIST CONVENTION HEALTH BOARD

HEALTH MANAGEMENT INFORMATION SYSTEM



ANNUAL REPORT, 2008



Prof. Tih Pius Muffih, LLB, MPH, PhD

Director of Health Services

Cameroon Baptist Convention Health Board (CBCHB)

P.O. BOX 01, Bamenda

North West Region, Cameroon, Africa

Ph: (237) 77 76 47 81,

EMAIL: piutih@cbchealthservices.org

Website: www.cbchealthservice.org

TABLE OF CONTENT

General Overview	1
Bed capacity	3
Staff Strength	4
Inpatient Admission	5
Outpatient Attendance.....	6
Health centers with highest and lowest OPD	7
Departments	8
Maternal and Child health	9
Deliveries	10
Health Centres with high ANC attendance but without L&D Services	10
Immunization	11
Surgeries	12
Death	12
Notifiable Diseases	13
HIV/AIDS Prevalence.....	14
CBCHB-HIV/AIDS Care and Treatment Activities for 2008	15
CBCHB/PMTCT activities for 2008.....	16
CBCHB-Tuberculosis activities for 2008.....	16
Most common diseases.....	17
Ten Leading Causes of death	17
Appendix.....	18

LIST OF ABBREVIATIONS

AB	Abortion
ANC	Antenatal Clinic
BBA	Birth Before Arrival
BBH	Banso Baptist Hospital
BHM	Baptist Hospital Mutengene
CBCHB	Cameroon Baptist Convention Health Board
CHF	Congestive Heart Failure
LRTI	Lower Respiratory Tract Infection
MBH	Mbingo Baptist hospital
NEOD	Neonatal Delivery
OPD	Out Patient Attendance
FP	Family Planning
SB	Still Birth
URTI	Upper Respiratory Tract Infection
UTI	Urinary Tract Infection

Mission Statement

The Cameroon Baptist Convention Health Board seeks to assist in the provision of care to all who need it as an expression of Christian love and as a means of witness in order that they might be brought to God through Jesus Christ. Thus, the Health Board shall provide exemplary health care with genuine compassion and with overriding purpose of evangelical witness.

General Overview

The Cameroon Baptist Convention Health Board (CBCHB) is a non-profit, faith-based healthcare organization, which started over 50 years ago in a small village (Mbem) in Donga/Mantung Division of the Northwest Region. It has over the years expanded into six of Cameroon's 10 regions: Northwest, Southwest, Center, West, Adamawa, and Littoral. Services offered by the CBCHB range from community primary health care to highly specialized hospital-based care with an integration of other social services. It comprises 5 hospitals (2 of which are 250-bed hospitals), 23 integrated Health Centers, 43 primary Health Centers, a pharmaceutical procurement and distribution department, a Private Training School for Health Personnel (PTSHP), a Center for Clinical Pastoral Education and Social Services (CECPES), Services for People with Disabilities, a comprehensive HIV and AIDS program, among others. The CBCHB works in partnership with national and international governmental and non-governmental health care organizations, and funding agencies in Africa and other parts of the world.

Apart from providing direct patient care services, the CBCHB institutions also provide opportunities for medical students and residents from Africa, Europe and America to gain experience and training in the field of Tropical medicine. The CBCHB's Private Training School for Health Personnel (PTSHP), train certified nurses, midwives, dental assistants; laboratory, pharmacy, x-ray, physiotherapy and primary health care technicians. The school also offers personnel of the Board screening course and other specialized trainings. In 2008, the school started ran a pharmacy auxiliary course to completion, training 25 aides. A couple of courses were started and completion is due in 2009. These include 25 persons on advanced practical nursing, 20 persons on laboratory auxiliary, 13 laboratory assistants, 5 anaesthesia nurses, 16 dental assistants, and 3 physiotherapy aides. The school is also involved in orientating externally trained nurses who are recruited for CBCHB use.

Leadership of the school changed in 2008. Ms Betty Mantay acted in the interim following Sr Katty Kroll's ill health and handed over to Mrs Ngwayu Margaret was appointed the Director at the end of the year.

Important to note also is the fact that the Board has gone beyond first level training to offer specialized training in various domains like the Pan African Academy of Christian Surgeons (PAACS) residency program, the Christian Internal Medicines Specialization (CIMS) program, and so on.

Another crucial activity of the CBCHB is the fight against HIV and AIDS, which it has championed for many years now. In 1999, the Board created a community based AIDS education program called AIDS Care and Prevention Program (ACP). The program today is a huge and comprehensive one with 13 components some of which are: Community Initiative AIDS Control and Prevention Program (CIACP), Youth Network for Health (YONEFOH), Prevention of Mother-to-Child transmission of HIV (PMTCT), Care and Treatment of people living with HIV and AIDS, Support to people living with HIV/AIDS and affected people just to name a few.

Spiritual care offered through the chaplaincy service is central in the activities of all its institutions. The chaplaincy service works with other services of the Board to meet the psychosocial and spiritual needs of both staff and patients. The Center for Clinical Pastoral Education and Social Services (CECPES) is specialized in training Christian chaplains, professional Christian counselors and church pastors for effective Pastoral Care and Social ministries of the church.

Also, the CBCHB has over the years pioneered the provision of various services to the Cameroonian public including formal education for people with disabilities (the blind, the deaf, and even those who have lost limb(s) due to leprosy). The Board also rehabilitates some of these handicapped people in their various communities.

The Life Abundant Primary Health Program (LAP) is an arm of the board that does not only extend services to very remote communities but also act as the fore runner to services establishment and scale in the communities. LAP attained over 80% of her 2008 goals which were largely on trainings. Some of the trainings organized included the training of 15 trained birth attendants at Jikijem Baptist Health Center and the training of 7 LAP Supervisors and 5 nurses on PMTCT service provision and TB. Several other refresher courses were organized. Working in collaboration with BBH Care and treatment site, LAP started the innovative program of facilitating the provision of drugs to people on ARVs who are in the remote villages. This is very helpful to the people because the cost which is often a barrier to treatment and increases defaulting rate is overcome.

A health seeking behavior survey was conducted in Saah village by Mr. Wanyu Benjamin as part of his assignment to obtain a diploma in Community Health Sciences. This study will help LAP improve on the utilization rate of some of our PHCs that are not doing well. He graduated on the 9th of December and is back to work with LAP.

2008 can be seen as another year of success as there has been a significant improvement in the services provided when figures for this year are put side by side with those of the preceding year (2007). Not only have the activities of the CBCHB's health institutions been scaled up in terms of quality and quantity, there has equally been an expansion in terms of population coverage as people in Bayangam and Bafia now benefit from the spectacular health care provided at CBCHB's institutions.

Below is a presentation of data for some key indicators that can be used to track progress or measure the performance of CBCHB's health institutions. For all indicators, the first part disaggregates data for the five main hospitals and 23 health centers while the second part compares the situation of 2008 with that of 2007.

Table 1 - Bed Capacity for BBH, MBH, BHM, BANYO, MBEM and Other institutions for 2008

Hospital	General Medicine	Maternity	Pediatric	Surgical	Total	%
BBH	104	43	54	54	255	23.8
MBH	154	22	26	58	260	24.2
BHM	17	15	6	6	44	4.1
BANYO	21	3	7	8	39	3.6
MBEM	18	17	5	0	40	3.7
Other Institutions	241	152	42	0	435	40.5
Total	555	252	140	126	1073	100.0

The five main hospitals have 638(59.5%) of the total 1073 beds in CBCHB health institutions, with a majority (24.2%) of the beds found in MBH while just 4.1% are available at BHM

Table 2: Bed Capacity for 2008 compared to 2007

SN	UNIT	January to December		% CHANGE
		2007	2008	
1	General	541	555	2.6
2	Maternity	262	252	-3.8
3	Pediatric	133	140	5.3
4	Surgical	125	126	0.8
	Total	1061	1073	1.1

Comparing the overall situation for 2008 with that of 2007, it can be observed that there has been an increase of 1.1% in the total number of beds for CBCHB's health institutions.

Table 3: Staff Strength for BBH, MBH, BHM, BANYO, MBEM and Other institutions for 2008

Hospital	BBH	MBH	BHM	BANYO	MBEM	Other Institutions	Total
Doctors	14	9	4	1	0	11	39
Nurses	130	104	43	5	3	140	425
Auxiliary	99	75	24	11	4	167	380
Paramedicals.	42	40	11	8	1	174	276
Administrators.	3	3	1	0	0	7	14
Administrative Staff	22	7	3	2	1	70	105
Casual	0	0	0	13	0	9	22
Others	101	214	29	22	6	205	577
Total	411	452	115	62	15	783	1838
%	22.4	24.6	6.3	3.4	0.8	42.6	100.0

The overall staff strength of CBCHB for 2008 stood at 1838.

Table 4: Staff strength for 2008 compared to 2007

SN	CADRE	January to December		% CHANGE
		2007	2008	
1	DOCTORS	31	39	25.8
2	TRAINED NURSES	372	425	14.2
3	AUXILIARY	374	380	1.6
4	TRAINED PARA MED.	195	276	41.5
5	ADMINISTRATORS	9	8	-11.1
6	ADMINISTRATIVE STAFF	92	105	14.1
8	OTHERS	393	577	46.8
9	CASUAL	211	22	-89.6
	TOTAL	1,677	1,832	9.2

Comparing the staffing situation of CBCHB for 2008 with that of 2007, it is noticed that there has been an increase (9.2%) in the total number of staff for CBCHB institutions with significant increases for Doctors

(25.8%), trained para medicals (41.5%), nurses (14.2%) and others (46.8%). The number of casual workers is a function of ongoing construction works. There is overall increase in CBCHB 2008 staffing. This is not only due to recruitment but also to a consequence of reporting adjustment: Staff of LAP Bamkikai, Health Services Complex Mutengene and the Director of CBC Health Services' Office were previously not reported because these were not direct services delivery points but are included in 2008 statistic.

Table 5: Inpatients Admission for BBH, MBH, BHM, BANYO, MBEM and Other institutions for 2008

Hospital	Maternity	Pediatrics	Surgical	Medical	Total	%
BBH	1,124	1,196	1,317	3,197	6,834	21.4
MBH	717	917	2,077	3,333	7,044	22.1
BHM	547	639	556	1,297	3,039	9.5
BANYO	113	222	183	596	1,114	3.5
MBEM	153	68	14	383	618	1.9
Other Institutions	3,296	2,427	-	7,551	13,274	41.6
Total	5,950	5,469	4,147	16,357	31,923	100.0

The total number of admissions for 2008 is 31,923 with a majority (22.1%) of this figure from MBH and just 1.9% for MBEM. Admissions for all other institutions stood at 13274(41.6%).

Table 6: Inpatient Admission for 2008 compared to 2007

SN	UNIT	January to December		% CHANGE
		2007	2008	
1	Maternity	5,699	5,950	4.4
2	Medical	15,608	16,357	4.8
3	Paediatrics	6,417	5,469	-14.8
4	Surgical	3,925	4,147	5.7
	Total	31,649	31,923	0.9

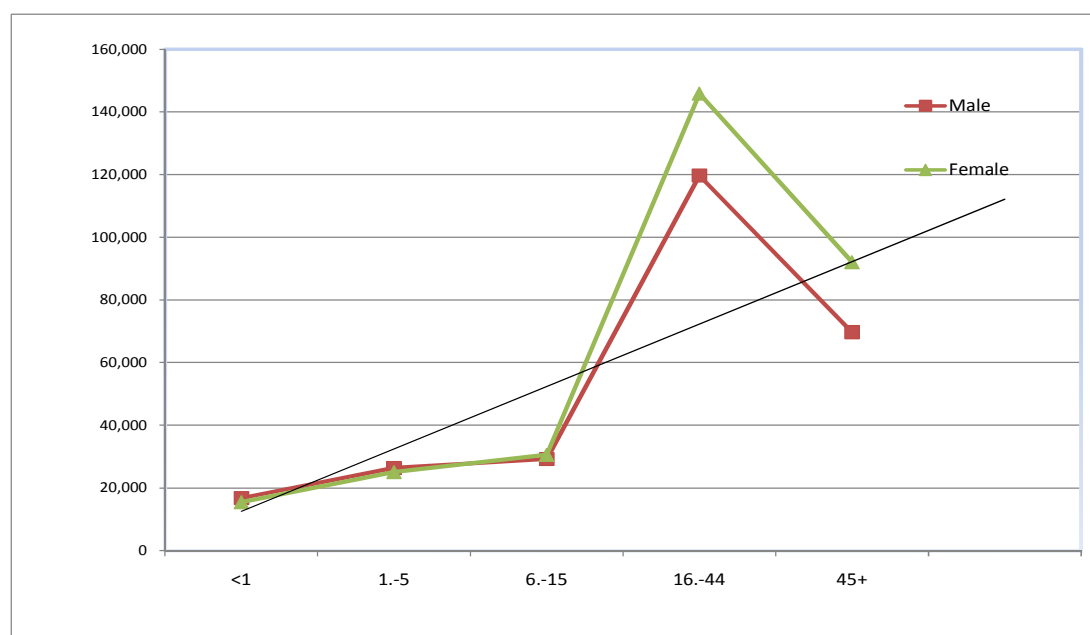
Generally there is a small increase of 0.9% in the number of inpatient admissions for CBCHB institutions in 2008 compared to 2007. Despite this slight increase, the pediatric unit witnessed a significant drop (14.8%) while the surgical, medical and maternity units registered increases of 5.7%, 4.8 and 4.4% respectively.

Table7: Outpatients Attendance for BBH, MBH, BHM, BANYO, MBEM and other institutions

OUTPATIENT	OPD ATTENDANCE		%
	2007	2008	Change
Hospital			
BBH	71,967	80,811	12.3
MBH	47,950	51,740	7.9
BHM	50,465	56,689	12.3
BANYO	8,754	8,291	-5.3
MBEM	4,032	3,634	-9.9
Other Institutions	314,272	369,553	17.6
Total	497,440	570,718	14.7

On the whole, there is a significant increase (14.7%) in outpatient attendance in 2008 compared to that of 2007. While OPD figures for BBH, MBH, BHM and other institutions are on an increase, that of Banyo and Mbem dropped.

Fig 1: Gender disaggregating of OPD Attendance by Age Groups for 2008



It can be observed that the attendance per sex significantly differ from the 16 -44 age group. It is unclear whether more female become sick from this point on or more female utilize health

services. It is clear however that this is the most active and vulnerable age group. The bulk of the youths are in this age group with high rates of accidents and infectious e.t.c It is also the reproductive age group with all its inherent problems. Finally the bulk of the population of Cameroon falls in this age group.

Table 8: Five Health centers with Highest and Lowest OPD

SN	Highest		Lowest	
	Health Center	Attendance	Health Center	Attendance
1	MBOPPI	89,380	AKEH	1,688
2	ETOUG-EBE	84,908	NGEPTANG	2,504
3	NKWEN	57,127	ALLAT	2,583
4	KUMBA	28,557	ROMKONG	2,634
5	EKUNOU	18,172	SARKI BAKA	2,658

Mboppi, Etoug-Ebe, Nkwen, Kumba and Ekounou contributed more to the increase of 17.6% OPD attendance while Akeh, Ngeptang, Allat, Romkong and Sarkibaka contributed least. However, these utilization figures are a function of the base population and very likely affordability to use health services will vary from urban to rural settings.

Table 9: Departmental Patient Flow for Five Hospitals and other Institutions

Department	BBH	MBH	BHM	BANYO	MBEM	OTHERS	TOTAL	%
PHARMACY	40,677	43,531	48,487	6,209	3,408	255,334	397,646	45.8
LABORATORY	32,419	33,700	28,313	4,774	1,394	128,817	229,417	26.4
PATIENTS SEEN BY DRS.	13,676	17,987	10,108	4,784	390	27,533	74,478	8.6
EYE	9,575	9,654	8,304	90	74	30,188	57,885	6.7
CHAPLAINCY	6,577	1,725	2,014	455	550	26,926	38,247	4.4
DENTAL	3,955	1,289	3,063	495	9	20,459	29,270	3.4
UTRA - SOUND	5,087	4,712	2,126	1,335	0	2,686	15,946	1.8
PHYSIOTHERAPY	2,299	4,439	1,255	0	0	7,075	15,068	1.7
X - RAY	3,986	4,254	0	212	0	1,106	9,558	1.1

As one would expect, the pharmacy and laboratories are the most utilized department.

Table 10: Departmental patient flow for 2008 compared to 2007

SN	UNIT	January to December		% CHANGE
		2007	2008	
1	EYE	43,465	57,885	33.2
2	X – RAY	7,776	9,558	22.9
3	PHYSIOTHERAPY	9,285	15,068	62.3
4	UTRA – SOUND	11,630	15,946	37.1
5	DENTAL	25,500	29,270	14.8
6	LABORATORY	224,746	229,417	2.1
7	PHARMACY	396,757	397,646	0.2
8	CHAPLAINCY	19,579	38,247	95.3
9	PATIENT SEEN BY DRS	51,524	74,478	44.6
	Total	790,262	867,515	9.8

From the above table, it can be observed that there is an increase of 9.8% in the total number of patients seen at all departments. Exceptionally all departments witnessed an increase in the number of patients seen when figures for 2008 are compared with those of 2007. Not ignoring the improvement in the quality of services that attract more clients, the extension of services to more CBCHB institutions contributed significantly to the increases observed in table 10.

Table 11: Maternal and Child Health for 2008 compared to 2007

	January to December		% CHANGE
	2007	2008	
Antenatal Clinic	42,396	47,284	11.5
Family Planning	3,147	3,594	14.2
Infant Welfare Clinic	32,415	34,962	7.9
Preschool Clinic	7,907	9,887	25.0
Total	85,865	95,727	11.5

Uptake in maternal health services for 2008 witnessed an increase of 11.5 compared to that of 2007. The increase of 4.4% for maternity admissions, 2.2% for live deliveries and the drop in cases of preterm, Pre-term, birth before arrival and abortion can be attributed to improvements in the quality of MCH services.

Table 12: Deliveries for 2008 compared to 2007

DELIVERIES	January to December		% CHANGE
	2007	2008	
LIVE BIRTH	5,273	5,388	2.2
PRE-TERM	189	151	-20.1
NEOD	31	44	41.9
SB	137	147	7.3
BBA	95	74	-22.1
AB	120	79	-34.2
Total	5,845	5,883	0.7

Generally there has been a slight increase of 0.7% in the total number of deliveries in 2008. A significant but desired drop was observed in the number of pre-term, BBA and abortions in 2008 relative to 2007.

Table 13: Health Centers with High ANC but without Labour & Delivery Services

Health Centers	ANC			RANK
	Old	New	Total	
ETOUGH-EBE	1,509	6,334	7,843	1
MBOPPI	1,456	5,837	7,293	2
NKWEN	712	2,607	3,319	3
EKOUNOU	256	1,290	1,546	4
BAFOUSAM	289	1,191	1,480	5

Deliveries and other aspects of reproductive health can be further scaled up by enabling health centers that see a reasonable number of pregnant women at antenatal clinic to start providing labour and delivery services so as to ensure continuum of care for pregnant women.

Table 14: Immunization for 2008 compared to 2007

Vaccine	January to December		% CHANGE
	2007	2008	
Meningitis	3,260	5,525	69.5
Others	6,786	7,662	12.9
Measles	5,945	5,369	-9.7
BCG	6,678	6,465	-3.2
Tetanus	15,933	19,712	23.7
DPT	16,767	18,151	8.3
POLIO	22,039	25,232	14.5
Total	77,408	88,116	13.8

Although some Vaccines witnessed a drop, overall immunization coverage in 2008 increased by 13.8%.

Fig 2: IMMUNIZATION for 2008 compared to 2007



Surgeries for BBH, MBH, BHM, BANYO, MBEM and other institutions

Institution	Surgery Type		Total	%
	Minor	Major		
BBH	3,953	1,601	5,554	23.3
MBH	1,623	2,011	3,634	15.2
BHM	998	639	1,637	6.9
BANYO	218	162	380	1.6
MBEM	112	21	133	0.6
OTHERS	12,540	0	12,540	52.5

The trend observed in the table above is supported by the fact that BBH and MBH are referral hospitals.

Table 15: Surgeries for 2008 compared to 2007

Type	January to December		% CHANGE
	2007	2008	
MINOR	16,388	19,432	18.6
MAJOR	4,541	4,446	-2.1
TOTAL	20,929	23,878	14.1

There is a significant increase in the total number of surgeries from 2007 to 2008 with a common observation being more minor surgeries than major surgeries for 2008. There is a decrease of 2.1% in major surgeries likely due to the close out of the PAACS program at BBH

Table 16: Deaths for 2008 compared to 2007

Type	January to December		% CHANGE
	2007	2008	
Medical	1196	1156	-3.3
Maternal	16	5	-68.8
Total	1212	1161	-4.2

Overall there has been a 4.2% drop in the total number of deaths for 2008 compared to 2007. This is good news as this represents a higher level of result which is a reflection of improvement in the quality of services provided. The number of medical deaths reduced from 1196 in 2007 to 1156 in 2008 giving a

reduction rate of 3.3%. The more significant drop was in maternal deaths from 16 down to 5, a drop of 68.8%.

Table 17: Notifiable Diseases for 2008 compared to 2007

Diseases	January to December		% CHANGE
	2007	2008	
Neonatal tetanus	7	9	28.6
Leprosy	4	6	50.0
Yellow fever	255	196	(23.1)
Cerebrospinal meningitis	188	259	37.8
Human rabies	-	3	-
tuberculosis	1,154	1,763	52.8
Cholera	-	-	-
Typhoid fever	303	447	47.5
Poliomyelitis	1	-	(100.0)
Measles	328	150	(54.3)

There has been a marked increase in the number of patients who present with TB (52.8%), measles (33.3%), Typhoid fever (47.5%) and Cerebrospinal meningitis (47.9). The driving force behind these could be HIV.

Table 18: HIV Prevalence for 2008 compared to 2007

Type of Clients	2007		2008		% Change
	# Screened	% HIV+	# Screened	% HIV+	
Blood donors	4,160	4.3	3,629	5.0	0.7
Patients	23,239	23.0	24,636	26.0	3.0
Total	27,399	20.2	28,265	23.3	3.1

A small increase of 0.7% HIV prevalence was observed amongst blood donors. HIV prevalence among blood donors remains similar to the national figures obtained in the 2004 DHS survey.

Table 19: CBCHB-HIV and AIDS Care and Treatment activities for 2008

Table 19a: Enrolment into ART Care

SN	SITE	ART ENROLLMENT	
		CUMULATIVE	CURRENT *
1	BHM	555	510
2	MBH	587	517
3	MBOPPI	1,060	1,017
4	NKWEN	1,926	1,833
5	BBH	2,159	2,027
	TOTAL	6,287	5,904

Current = Cumulative minus deaths, transfer out and stopped

Cumulatively, 6,287 patients have enrolled on ART through the 5 CBCHB Care and treatment sites and currently 5,904 patients were on ART at the end of 2008. Other patients either died, transferred out of the Care and treatment sites or stopped taking the medication.

Table 19b: PCR Testing

SITE	2007		2008	
	# Tested	# HIV+	# Tested	# HIV+
BBH	52	6	160	20
MBH	28	0	79	5
NKWEN	104	9	265	20
MBOPPI	3	0	203	6
BHM	23	1	189	6
Total	210	16	896	57
%		7.6		6.4

With the introduction of biotherapy for PMTCT in February 2007, a 7.6% transmission rate was obtained in the five CBCHB Care and treatment sites. This further dropped to a crude transmission rate of 6.4% in 2008. Adjusting for other factors like feeding options and disaggregating by maternal regimen, lower transmission rates could be obtained.

Table 20: CBCHB/PMTCT activities for 2008 compared to 2007

Indicators	January to December		% Change
	2007	2008	
Number of facilities	386	394	2.1
Total Number of Women receiving counseling	79,088	93,054	17.7
Total Number tested	75,869	89,975	18.6
Total Number of women who returned for results	74,808	89,036	19.0
Total Number of women with HIV+ results	5,831	5,703	-2.2
Number of mothers receiving Nevirapine	4,573	5,017	9.7
Number of Infants receiving Nevirapine	2,563	3,077	20.1

Table 22: CBCHBB Tuberculosis activities for 2008

Indicators	2007	2008	% CHANGE
Total # of TB patients	883	1,190	25.8
Number screened for AFB	2,192	4,058	46.0
Number of pulmonary TB	749	923	18.9
Number of Smear Positive	619	730	15.2
Number of Smear Negative	130	195	33.3
Number of Extra Pulmonary TB	134	284	52.8
Number tested For HIV	784	943	16.9
Number tested HIV+	403	463	13.0

Table 21: Ten Leading Diseases for 2008

Disease	Male	Female	Total
Malaria	15,300	24,707	40,007
Hypertension	7,774	3,940	11,714
Conjunctivitis	5,301	5,591	10,892
Gastritis/PUD	3,832	6,534	10,366
URTI/LRTI	4,138	5,494	9,632
Epilepsy	2,232	4,605	6,837
Diabetes Mellitus	3,161	2,405	5,566
Decubitus ulcers/wounds	1,915	3,113	5,028
Cystitis/UTI	1,427	3,556	4,983
GE/Dehydration	1,776	2,793	4,569
Total	46,856	62,738	10,9594

As far as leading diseases are concerned, malaria continues to top the list. This is closely followed by hypertension and eye conditions. Cystitis/UTI and GE/Dehydration occupy the last two positions respectively. It is a cause for concern to note hypertension galloping from the bottom of the list to the almost the top in the last 5 years.

Table 22: Leading Causes of Deaths for 2008

Disease	Male	Female	Total
HIV/AIDS	141	153	294
Malaria	48	31	79
Congestive Heart Failure (CHF)	37	37	74
Meningitis	21	26	47
Tuberculosis	23	23	46
Aneamia	26	12	38
Pneumonia	21	16	37
Bacillary Dysentery	17	19	36
Headaches	13	10	23
Hypertension	9	9	18

The true figures for HIV and AIDS death could be higher given that some of the death could be higher given that some of the deaths of the list are also as a result of HIV infections. Therefore the majority of the deaths could certainly be due to HIV and AIDS.

IDENTIFICATION				BED CAPACITY					PERSONNEL									
SERIAL #	INSTITUTION / MONTH	PROVINCE	# OF MONTHS	GENERAL	MATERNITY	PEDIATRIC	SURGICAL	TOTAL	DRS	TRAINED NURSES	AUXILIARY	TRAINED PARA MED.	ADMINISTRATORS	ADM. STAFF	CHAPLAINS	OTHERS	CASUAL	TOTAL
1	AKEH	NW	12	9	6	0	0	15	0	1	4	0	0	0	0	5	0	9
2	ALLAT	AD	12	8	3	4	0	15	0	2	5	1	0	2	0	8	0	16
3	ASHONG	NW	12	12	3	0	0	15	0	2	6	1	0	2	1	5	0	16
4	BAFOUSSAM	WE	12	8	0	0	0	8	0	9	3	5	0	4	0	11	0	25
5	BANGOLAN	NW	12	26	19	0	0	45	0	5	7	4	0	1	1	8	0	23
6	BANYO	AD	12	21	3	7	8	38	1	5	11	8	0	2	1	22	13	50
7	BBH	NW	12	104	43	54	54	254	14	130	99	42	3	22	8	101	0	416
8	BELO	NW	12	30	29	0	0	59	0	2	6	2	0	2	0	7	0	18
9	EKUNOU	CE	12	0	0	0	0	0	0	2	3	7	0	3	1	5	0	21
10	ETOUG-EBE	CE	12	0	0	0	0	0	2	14	13	25	1	7	1	20	0	79
11	FINKWI	NW	12	7	7	0	0	14	0	2	1	1	0	2	0	5	0	11
12	JIKIJEM	NW	12	12	19	7	0	38	0	3	5	1	0	1	1	8	0	19
13	KOUHOUAT	AD	12	16	4	8	0	28	0	6	10	2	0	1	6	7	2	24
14	KUMBA	SW	12	0	0	0	0	0	0	14	8	3	0	4	1	11	0	39
15	KWIGHE	NW	12	16	8	0	0	24	0	0	4	3	0	2	0	5	0	13
16	LASSIN	NW	12	15	7	3	0	21	0	1	7	0	0	2	0	8	0	17
17	MBEM	NW	12	18	17	5	0	40	0	3	4	1	0	1	1	6	0	15
18	MBH	NW	12	154	22	26	58	260	9	104	75	40	3	7	7	214	0	459
19	MBOPPI	LIT	12	0	0	0	0	0	6	36	9	99	0	21	3	6	0	180
20	MUTENGENE	SW	12	17	15	6	6	44	4	43	24	11	1	3	4	29	0	119
21	NDU	NW	12	22	14	7	0	43	0	11	9	2	0	2	1	11	0	35
22	NGEPTANG	NW	12	14	10	0	0	24	0	2	6	3	0	1	0	5	0	14
23	NGOUNSO	AD	12	17	4	6	0	27	0	2	7	0	0	2	1	10	0	21
24	NKWEN	NW	12	0	0	0	0	0	3	18	39	11	0	5	2	34	6	73
25	NYAMBOYA	AD	12	10	4	3	0	16	0	2	5	0	0	2	0	12	0	21
26	ROMKONG	NW	12	4	4	4	0	12	0	1	4	0	0	1	0	3	1	9
27	SABGA	NW	12	10	6	0	0	14	0	3	2	3	0	2	0	5	0	11
28	SARKI BAKA	AD	12	5	5	0	0	10	0	2	4	1	0	1	0	6	0	12
	TOTAL		335	555	252	140	126	1064	39	425	380	276	8	105	40	577	22	1872

IDENTIFICATION				ATTENDANCE															
SERIAL #	INSTITUTION / MONTH	PROVINCE	# OF MONTHS	OUTPATIENT															G.Tot (M&F)
				<1			1 to 5			6 to 15			16 to 44			45+			
				Male	Female	Total	Male	Female	Total	Male	Female	Total	Male	Female	Total	Male	Female	Total	
1	AKEH	NW	12	87	68	141	161	117	271	95	72	167	217	447	664	216	229	445	1688
2	ALLAT	AD	12	126	107	233	175	192	367	101	129	230	379	981	1360	219	174	393	2583
3	ASHONG	NW	12	154	95	249	273	214	487	298	283	581	1185	1925	3110	453	611	1064	5491
4	BAFOUSSAM	WE	12	471	443	914	774	855	1572	956	881	1837	3068	4544	7612	2638	2767	5405	17340
5	BANGOLAN	NW	12	247	185	432	460	360	820	244	240	484	1071	4052	5123	528	648	1176	8035
6	BANYO	AD	12	86	64	150	194	173	367	213	201	414	1090	1496	2586	2669	2105	4774	8291
7	BBH	NW	12	1568	1502	3070	1773	1363	3136	1885	1645	3530	15968	24151	40119	14253	16703	30956	80811
8	BELO	NW	12	188	189	377	263	230	493	237	237	474	598	1025	1623	477	543	1020	3987
9	EKUNOU	CE	12	731	623	1354	1409	1172	2581	1135	1064	2199	3731	5992	9723	1112	1203	2315	18172
10	ETOUG-EBE	CE	12	4154	3975	8129	4293	4175	8468	4602	6242	11823	20737	26115	46852	4866	4770	9636	84908
11	FINKWI	NW	12	144	195	311	269	238	507	242	255	497	534	1076	1610	618	852	1470	4395
12	JIKIJEM	NW	12	115	102	217	160	168	328	177	131	308	659	873	1532	532	647	1179	3564
13	KOUHOUAT	AD	12	87	88	175	165	144	309	127	109	236	1134	2223	3357	754	502	1256	5333
14	KUMBA	SW	12	1175	1191	2366	2621	2315	4936	1772	1979	3751	3945	6553	10498	3286	3720	7006	28557
15	KWIGHE	NW	12	92	94	186	174	189	363	169	172	324	377	1530	1907	335	405	740	3520
16	LASSIN	NW	12	175	142	317	207	196	403	230	177	407	424	677	1101	332	447	779	3007
17	MBEM	NW	12	160	131	291	157	133	290	242	265	507	379	546	925	857	764	1621	3634
18	MBH	NW	12	625	408	1033	988	855	1843	1927	1705	3632	20623	0	20623	0	24609	24609	51740
19	MBOPPI	LIT	12	1997	1512	3509	4060	3318	7378	2960	2993	5953	18055	26992	45047	15787	11706	27493	89380
20	MUTENGEN	SW	12	1405	1284	2689	2726	2353	5079	2706	2584	5290	12411	18760	31171	6096	6364	12460	56689
21	NDU	NW	12	141	149	290	239	274	513	318	272	590	1632	2642	4274	3073	2891	5964	11631
22	NGEPTANG	NW	12	46	50	96	163	117	280	92	94	186	221	1136	1357	306	279	585	2504
23	NGOUNSO	AD	12	497	510	1007	639	688	1327	681	721	1402	769	847	1616	642	774	1416	6768
24	NKWEN	NW	12	1660	1829	3489	3421	4445	7866	7149	7368	14517	8231	7834	16065	8293	6897	15190	57127
25	NYAMBOYA	AD	12	264	174	438	96	80	176	39	57	96	1400	1347	2747	480	218	698	4155
26	ROMKONG	NW	12	126	72	198	171	155	326	91	97	188	298	971	1269	226	427	653	2634
27	SABGA	NW	12	110	118	228	234	293	527	333	345	678	346	687	1033	226	280	506	2972
28	SARKI BAKA	AD	12	131	171	302	143	238	381	218	262	480	246	347	593	399	503	902	2658
	TOTAL		335	16762	15471	32233	26408	25050	51458	29239	30580	59819	119728	145769	265497	69673	92038	161711	570718

IDENTIFICATION																						
SERIAL #	INSTITUTION / MONTH	PROVINCE	# OF MONTHS	MATERNITY						PEDIATRIC												
				MATERNITY						ADMISSIONS	HOSP. DAYS	AV. STAY	<1			1 to 5			6 to 15			
				6 to 15	16 to 44	45 +	Total maternity Admissions	HOSP. DAYS	AV. STAY				Male	Female	Total	Male	Female	Total	Male	Female	Total	
1	AKEH	NW	12	0	40	0	72	341	4.7	0	0	-	0	0	0	0	0	0	0	0	0	
2	ALLAT	AD	12	0	43	0	43	94	2.2	151	448	3	25	13	38	52	34	86	12	15	27	
3	ASHONG	NW	12	0	58	0	79	257	3.3	0	0	-	0	0	0	0	0	0	0	0	0	
4	BAFOUSSAM	WE	12	0	0	0	0	0	-	0	0	-	0	0	0	0	0	0	0	0	0	
5	BANGOLAN	NW	12	0	481	0	481	1682	3.5	0	0	-	0	0	0	0	0	0	0	0	0	
6	BANYO	AD	12	2	111	0	113	314	2.8	222	668	3	20	8	28	28	21	49	9	13	22	
7	BBH	NW	12	0	1124	0	1124	5069	4.5	1196	8072	6.7	128	84	212	185	116	301	167	141	308	
8	BELO	NW	12	0	393	0	589	1519	2.6	0	0	-	0	0	0	0	0	0	0	0	0	
9	EKUNOU	CE	12	0	0	0	0	0	-	0	0	-	0	0	0	0	0	0	0	0	0	
10	ETOUG-EBE	CE	12	0	0	0	0	0	-	0	0	-	0	0	0	0	0	0	0	0	0	
11	FINKWI	NW	12	1	57	0	73	231	3.2	0	0	-	0	0	0	0	0	0	0	0	0	
12	JIKJEM	NW	12	0	428	0	428	1505	3.5	152	605	4	41	27	68	24	27	51	12	21	33	
13	KOUHOUAT	AD	12	0	176	0	176	447	2.5	522	1444	2.8	66	71	137	185	129	314	30	28	58	
14	KUMBA	SW	12	0	0	0	0	0	-	0	0	-	0	0	0	0	0	0	0	0	0	
15	KWIGHE	NW	12	0	85	0	131	269	2.1	0	0	-	0	0	0	0	0	0	0	0	0	
16	LASSIN	NW	12	0	92	0	92	249	2.7	0	0	-	0	0	0	0	0	0	0	0	0	
17	MBEM	NW	12	0	153	0	153	442	2.9	68	161	2.4	10	10	23	15	22	37	0	3	3	
18	MBH	NW	12	0	539	0	717	2888	4	917	5504	6	75	67	142	191	147	338	240	199	439	
19	MBOPPI	LIT	12	0	0	0	0	0	0	0	0	0	0	0	0	0	0	0	0	0	0	
20	MUTENGEN	SW	12	0	547	0	547	2193	4	639	2210	3.5	76	72	148	142	160	302	113	84	197	
21	NDU	NW	12	0	176	46	222	1109	5	340	756	2.2	29	41	69	38	32	71	33	38	71	
22	NGEPTANG	NW	12	0	159	0	159	658	4.1	0	0	-	0	0	0	0	0	0	0	0	0	
23	NGOUNSO	AD	12	0	240	0	240	304	1.3	722	1697	2.4	79	98	177	92	119	211	102	140	242	
24	NKWEN	NW	12	0	0	0	0	0	-	0	0	-	0	0	0	0	0	0	0	0	0	
25	NYAMBOYA	AD	12	4	132	35	171	298	1.7	474	938	2	68	49	117	164	113	277	26	28	54	
26	ROMKONG	NW	12	0	84	0	84	214	2.5	66	220	3.3	8	7	15	17	23	40	5	5	10	
27	SABGA	NW	12	0	35	0	52	173	3.3	0	0	-	0	0	0	0	0	0	0	0	0	
28	SARKI BAKA	AD	12	20	184	0	204	574	2.8	0	0	-	0	0	0	0	0	0	0	0	0	
	TOTAL		335	27	5337	81	5950	20830	69.2	5469	22723	41.3	625	547	1174	1133	943	2077	749	715	1464	

IDENTIFICATION																							TOTAL INPATIENT
SERIAL #	INSTITUTION / MONTH	PROVINCE	# OF MONTHS	MEDICALS																			
				ADMISSIONS	HOSP. DAYS	AV. STAY	^			1 to 5			6 to 15			16 to 44			45+				
							Male	Female	Total	Male	Female	Total	Male	Female	Total	Male	Female	Total	Male	Female	Total		
1	AKEH	NW	12	122	413	3.4	7	9	16	14	8	22	10	9	19	12	30	42	8	8	16	174	
2	ALLAT	AD	12	161	428	2.7	0	0	0	0	0	0	0	0	0	37	97	134	11	13	24	355	
3	ASHONG	NW	12	377	1197	3.2	25	9	34	48	38	86	20	22	42	45	92	137	29	49	78	445	
4	BAFOUSSAM	WE	12	0	0	-	0	0	0	0	0	0	0	0	0	0	0	0	0	0	0	0	
5	BANGOLAN	NW	12	721	2143	3	43	40	83	95	88	183	24	34	58	49	159	208	24	35	59	1202	
6	BANYO	AD	12	596	2042	3.4	2	0	2	1	6	7	2	1	3	64	104	168	40	19	59	1114	
7	BBH	NW	12	3197	21584	6.8	0	0	0	0	0	0	2	8	10	695	783	1478	336	372	708	6834	
8	BELO	NW	12	548	1481	2.7	39	40	79	63	52	115	45	41	86	49	152	201	24	44	68	549	
9	EKUNOU	CE	12	0	0	-	0	0	0	0	0	0	0	0	0	0	0	0	0	0	0	0	
10	ETOUG-EBE	CE	12	0	0	-	0	0	0	0	0	0	0	0	0	0	0	0	0	0	0	0	
11	FINKWI	NW	12	278	1026	3.7	7	12	22	28	24	52	12	30	44	26	66	94	18	36	54	307	
12	JIKIJEM	NW	12	271	1115	4.1	0	0	0	0	0	0	0	0	0	96	142	238	14	19	33	851	
13	KOUHOUE	AD	12	529	1540	2.9	11	9	20	15	24	39	19	11	30	104	210	314	55	75	130	1227	
14	KUMBA	SW	12	0	0	-	0	0	0	0	0	0	0	0	0	0	0	0	0	0	0	0	
15	KWIGHE	NW	12	351	937	2.7	20	15	35	41	40	81	21	15	36	53	86	139	18	40	58	384	
16	LASSIN	NW	12	471	1260	2.7	38	30	68	48	51	99	28	33	61	51	104	155	30	51	81	563	
17	MBEM	NW	12	383	1322	3.5	17	9	26	31	24	55	17	20	37	35	79	114	39	50	89	618	
18	MBH	NW	12	3333	38476	11.5	4	2	6	17	13	30	41	22	63	827	866	1693	845	696	1541	5644	
19	MBOPPI	LIT	12	0	0	0	0	0	0	0	0	0	0	0	0	0	0	0	0	0	0	0	
20	MUTENGEN	SW	12	1297	4073	3.1	4	7	11	3	8	11	12	21	33	230	461	691	165	141	336	3039	
21	NDU	NW	12	774	3120	4	0	0	0	0	0	0	0	0	0	156	190	346	69	104	173	1336	
22	NGEPTANG	NW	12	283	1375	4.9	27	31	58	31	31	62	13	20	33	23	64	87	19	24	43	442	
23	NGOUNSO	AD	12	1334	2559	1.9	0	0	0	0	0	0	0	0	0	295	308	603	246	273	519	2296	
24	NKWEN	NW	12	0	0	-	0	0	0	0	0	0	0	0	0	0	0	0	0	0	0	0	
25	NYAMBOYA	AD	12	647	1276	2	17	18	35	44	30	74	17	23	40	152	294	446	27	24	51	1292	
26	ROMKONG	NW	12	129	533	4.1	0	0	0	0	0	0	1	8	9	40	50	85	13	16	29	279	
27	SABGA	NW	12	287	1156	4	13	14	27	35	50	85	22	18	40	26	74	100	15	23	38	308	
28	SARKI BAKA	AD	12	268	843	3.1	17	28	45	22	41	63	36	31	67	25	39	64	24	22	46	472	
	TOTAL		335	16357	89899	83.4	291	273	567	536	528	1064	342	367	711	3090	4450	7537	2069	2134	4233	29731	

CAMEROON BAPTIST CONVENTION HEALTH BOARD HOSPITALS



Bansa Baptist Hospital



Mbingo Baptist Hospital



Mutengene Baptist Hospital



Dunger Baptist Hospital



Banyo Baptist Hospital